



LifeFocus

SUMMER 2018

Montcalm Community College

NONCREDIT SCHEDULE

Summer Camps

Discover Drones

Check out MCC's 19 summer camps available for youths of all ages.

First Aid

Achieve a course completion card in first aid.



Montcalm Community College

Contents

4-7 SUMMER CAMPS

19 summer camps available
for youths of all ages

8 COMMUNITY ENRICHMENT

Introduction to Blacksmithing

8 COMPUTER SKILLS

Networking Fundamentals

9-10 HEALTH CARE

11 HEALTH, FITNESS & RECREATION

Introduction to Pickleball

Pickleball Level 1

Drop-In Pickleball

12-13 POOL, GYM & FITNESS CENTER

14 LIFELONG LEARNERS

Fall Series

15 UPCOMING TRIPS



32nd ANNUAL HERITAGE FESTIVAL

Take a step back in time during the 32nd annual Heritage Festival, Aug. 2-4, at Montcalm Heritage Village on Montcalm Community College's Sidney campus, 2800 College Drive. During this three-day event, docents in period costumes offer tours of the village and its structures. Special programs include reenactments, historic displays, craft demonstrations and vendors, music, children's activities, vintage Base Ball and other offerings. Festival hours are 10 a.m. to 4 p.m. daily. Admission is free.

For more information, visit
www.montcalm.edu/heritage-festival
or call Karen Maxfield at 989-328-1065.

2 Life Focus

EASY ONLINE REGISTRATION! →



REGISTRATION

Registration for MCC's summer camps and summer career and personal development courses is available online at www.montcalm.edu/career-development. For registration questions or concerns, please call 616-754-7706 and press 7 for the Greenville campus or toll-free 877-328-2111 and press 7 for the Greenville campus.

MCC'S CONTINUING EDUCATION REFUND POLICY

Students receive a full refund for all courses and workshops cancelled by the college.

A full refund is given to students who officially drop a course by 5 p.m. one business day prior to the first class meeting. Failure to attend does not constitute an official drop and no refunds will be granted.

Students enrolling in *Education To Go* online courses have one week after the start date to drop the course for a full refund. MCC will enforce all other online and contracted companies' refund policies. Any special refund policies are clearly stated in the course descriptions.

All refunds are mailed to the address supplied at the time of enrollment. Processing takes at least two weeks.

Some images were provided by PhotoSpin at www.photospin.com.

Montcalm Community College is accredited by the Higher Learning Commission (hlcommission.org), a regional accreditation agency recognized by the U.S. Department of Education.

Montcalm Community College supports all state and federal laws that promote equal opportunity and prohibit discrimination.



SCECH FOR TEACHERS

STATE CONTINUING EDUCATION CLOCK HOURS

Continuing education courses designed for K-12 teachers and administrators.

Please visit www.montcalm.edu/career-development for course offerings, or contact MCC's SCECH Coordinator at 989-328-1011 prior to registering for classes in order to receive full SCECH credit.

Summer 2018 3

Summer Camps



SUMMER CAMPS

Stabilization, Strength & Agility Camp

Youths 14-17 years old

Camp Director is John Davis. The cost is \$25.

Personal instruction aims to condition young athletes for better and safer sports performance. Core strength, balance and plyometrics are some of the tools students will learn. Limit: 10 participants.

XPHE 298 01

Mon & Wed, June 11-20, 10:30-11:30 a.m.

Gym/Activities Building in Sidney

Dreamworld

Children entering 1st through 4th grades

Camp Director is Kurt Goodman. The cost is \$45.

Students creatively construct and modify buildings, applying basic engineering principles and using unique LEGO® kits. This is an integrated science and math class. Lunch and a snack are included.

XIND 804 01

Mon, June 11, 9 a.m.-4 p.m.

G212/Braman Center in Greenville

Pull Back Frenzy

Children entering 1st through 4th grades

Camp Director is Kurt Goodman. The cost is \$45.

Experience hands-on learning by creatively building and modifying race car machines through basic engineering skills using unique LEGO® kits. Lunch and a snack are included.

XIND 805 01

Tues, June 12, 9 a.m.-4 p.m.

G212/Braman Center in Greenville

Health Care Professions Camp

Youths entering 7th through 12th grades

Camp Director is Danielle Anderson. The cost is \$25.

Campers will experience first-hand challenges, opportunities and rewards of health professions. Hands-on activities are facilitated by health profession students, instructors and health care professionals. Diversity awareness and American Heart Association first aid training are also part of the camp experience. Lunch is included.

XMED 190 01

Wed & Thur, June 13 & 14, 9 a.m.-3 p.m.

A039/Stanley P. Ash Building in Sidney

Introduction to Simple Machines - Pulleys and Levers

Children entering 3rd through 6th grades

Camp Director is Kurt Goodman. The cost is \$45.

Campers will use the K'NEX® Education Intro to Simple Machines: Levers & Pulleys set to be introduced to the scientific concepts associated with two types of simple machines – levers and pulleys. Campers are provided with the opportunity to acquire skills using a hands-on, inquiry-based approach to information and concepts. Lunch and a snack are included.

XIND 815 01

Wed, June 13, 9 a.m.-4 p.m.

G212/Braman Center in Greenville



Introduction to Simple Machines – Gears

Children entering 3rd through 6th grades

Camp Director is Kurt Goodman. The cost is \$45. Sprocket gears, spur gears, rack-and-pinion and more. Campers will use the K'NEX® Education Gears set as an introduction to the scientific concepts associated with gears. Campers are provided with the opportunity to acquire skills using a hands-on, inquiry-based approach to information and concepts as they build, investigate, discuss and evaluate scientific principles in action. Lunch and a snack are included.

XIND 816 01

Thur, June 14, 9 a.m.-4 p.m.

G212/Braman Center in Greenville

Forces, Energy & Motion

Youths entering 6th through 8th grades

Camp Director is Kurt Goodman. The cost is \$45. Campers will use the K'NEX® Education Forces, Energy & Motion set that has been designed for students to investigate a variety of concepts related to forces, energy and motion. These concepts are fashioned around rigorous STEM content and national standards in science, technology, engineering and math. As campers engage in the activities, they will be learning, practicing and applying integrated process skills. Campers will be expected to craft fair test procedures, create meaningful data displays, make reasonable and data supported reports and analyze their collected data in light of the problem at hand. Lunch and a snack are included.

XIND 817 01

Fri, June 15, 9 a.m.-4 p.m.

G212/Braman Center in Greenville

Weld Camp – Middle School

Youths entering 7th through 9th grades

Camp Director is Adam Hopkins. The cost is \$85. Campers will learn welding safety before learning to stick, TIG and MIG weld. Each camper will complete a welding project. Lunch is included.

XWEL 810 01

Mon-Thur, June 18-21, 9 a.m.-2 p.m.

Room 532/Greenville High School

Exploring Machines

Youths entering 5th through 9th grades

Camp Directors is Kurt Goodman. The cost is \$85. Campers will use the K'NEX® Education Exploring Machines set, which is designed to expand middle school students' conceptual knowledge of simple machines. Topics include levers, pulleys, wheels, axles and gears. Students investigate, explore and experiment with the K'NEX® simple machine models as they analyze, synthesize and evaluate information. Lunch and a snack are included.

XIND 814 01

Mon-Tues, June 25-26, 9 a.m.-4 p.m.

G212/Braman Center in Greenville

Weld Camp – High School

Youths entering 10th through 12th grades

Camp Director is Adam Hopkins. The cost is \$85. Campers will learn welding safety before learning to stick, TIG and MIG weld. Each camper will complete a welding project. Lunch is included.

XWEL 810 02

Mon-Thur, June 25-28, 9 a.m.-2 p.m.

Room 532/Greenville High School



Summer 2018

Summer Camps

SUMMER CAMPS

continued

Discover Drones – Elementary School

Children entering 1st through 4th grades

Camp Director is Kurt Goodman. The cost is \$35.

Campers will learn about the usage of drones in the military and agriculture, while also learning the basics of flying a drone. Lunch and a snack are included.

XAVI 101 01

Wed, June 27, 9 a.m.-4 p.m.

G212/Braman Center in Greenville

Discover Drones – Middle School

Youths entering 5th through 8th grades

Camp Director is Kurt Goodman. The cost is \$35.

Campers will learn about the usage of drones in the military and agriculture, while also learning the basics of flying a drone. Lunch and a snack are included.

XAVI 102 01

Thur, June 28, 9 a.m.-4 p.m.

G213/Braman Center in Greenville

Discover Drones – High School

Youths entering 9th through 12th grades

Camp Director is Kurt Goodman. The cost is \$35.

Campers will learn about the usage of drones in the military and agriculture, while also learning the basics of flying a drone. Lunch and a snack are included.

XAVI 103 01

Fri, June 29, 9 a.m.-4 p.m.

G213/Braman Center in Greenville

Machine Tool Camp

Youths entering 7th and 8th grades

Camp Director is Adam Hopkins. The cost is \$75.

Experience the current world of machine tool. Campers will learn about manual machines including lathes, mills and drill presses. They also will learn about automated machining, including CNCs (computer numerical control) and robotics. Participants will leave the camp with a completed project. Parents are welcome to attend, at no cost. Lunch is included for children.

XIND 810 01

Mon-Thur, July 9-12, 9 a.m.-1 p.m.

G213/Braman Center in Greenville

Robotics Building System

Youths entering 7th through 10th grades

Camp Director is David Kohn. The cost is \$75.

Campers will use the K'NEX® Education Robotics Building System to learn how to apply programming skills to operate various K'NEX models. Campers will design and build fully-functioning models, write computer programs and use the Robotics Programming Software to communicate with and operate the models to solve Challenge Activities. Lunch and a snack are included.

XIND 818 01

Mon & Wed, July 9 & 11, 9 a.m.-4 p.m.

G212/Braman Center in Greenville

Art Is Everywhere Day Camp

**Children entering kindergarten
through 3rd grades**

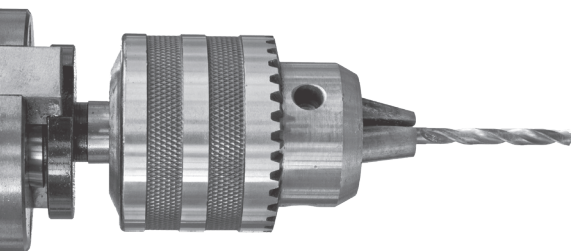
Camp Director is Sue Moss. The cost is \$30.

Children are invited to explore the world of art around them. Through painting and nature crafts, participants will have an opportunity to create amazing artwork. Lunch and a snack are included.

XART 110 01

Fri, July 13, 9 a.m.-3 p.m.

G129/Ash TLC in Greenville





Montcalm County Youth Law Enforcement Camp

Youths entering 6th through 8th grades

Camp Director is Kevin Sweeney. The cost is \$20. Middle school youths will learn about the field of criminal justice. They will be given hands-on activities related to law enforcement and will also learn about other components of the criminal justice field, including corrections and the court system. This class will combine classroom instruction with hands-on activities, including time in the MCC pool, gymnasium and outdoors. Students should dress appropriately for physical activity and water activities. All registrants will receive a T-shirt, water bottle and lunch. For more information, please contact F/Lt Kevin Sweeney at the Michigan State Police Lakeview Post at 517-719-1195 or email sweeneyk@michigan.gov.

Pick one date to attend:

XCRM 201 01

Tues, July 10, 8:30 a.m.-4 p.m.

XCRM 201 02

Tues, July 17, 8:30 a.m.-4 p.m.

XCRM 201 03

Tues, July 24, 8:30 a.m.-4 p.m.

Pickup/dropoff in Gym/Activities Building in Sidney

Where in the World is Ronald McDonald?

Children entering kindergarten through 5th grades

Camp Director is Michelle Gibson. The cost is \$25/child; \$40/2 children from same family; \$50/3 children from same family.

Campers will learn about the beef industry as well as about how we grow all the parts in a hamburger. McDonald's restaurants are located all over the world – campers will learn about how they are different and alike with respect to what foods they offer their customers. Production aspects of agriculture will be demonstrated utilizing the campus greenhouse. In addition, farm equipment and animals may be on display. Campers will have

the opportunity to swim in the MCC pool in the afternoon. Please bring a swimsuit and towel. To wrap up the day, parents will pick up their campers in the cafeteria, where everyone is welcome to enjoy fresh grilled hamburgers. Lunch is also provided.

XAGR 110 01

Fri, July 20, 8:30 a.m.-4:30 p.m.

S108/Smith Building in Sidney

Fine Arts Camp “Christmas in July” Children entering 3rd through 8th grades

Camp Director is Carolyn Johnson. The cost is \$98.

Through a variety of visual and performing arts, third- through eighth-graders will use their talents to enjoy an unseasonal holiday in the middle of the summer. A special art and performance presentation will be July 27 when campers' families can visit and see what the campers have experienced. Lunch is provided.

XMUS 100 01

Mon-Fri, July 23-27, 8 a.m.-4 p.m.

Barn Theater in Sidney

Go to [www.montcalm.edu/](http://www.montcalm.edu/career-development)
career-development for
CAMP REGISTRATION
& WAIVER FORMS.



Summer 2018 7

Noncredit Courses

COMMUNITY ENRICHMENT

Introduction to Blacksmithing

Taught by David Zannini. The cost is \$225.

This course will begin with blacksmithing basics and work into more advanced techniques. A portion of the course will focus on how to obtain the equipment needed to start blacksmithing at home. A multitude of projects will be created and taken home with the new blacksmith. Adults 18 years and older.

XIND 901 01

Mon & Thur, July 16-26, 4-8 p.m.

G224/Braman Center in Greenville

COMPUTER SKILLS

Networking Fundamentals

Taught by David Kohn. The cost is \$375.

This course introduces students to the architecture, structure, functions, components and models of the Internet and other computer networks. The principles and structure of IP addressing and the fundamentals of Ethernet concepts, media and operations are introduced. Students will be able to build simple LANs, perform basic configurations for routers and switches, and implement IP addressing schemes. Lab work is designed to simulate real-world networking. This course is the first of four networking courses to prepare students for the Cisco Certified Network Associate (CCNA) certification exam. This is a hybrid course, which requires some online coursework. The required text is available at the MCC Bookstore or online at www.montcalm.edu/bookstore.

XCIS 127 01

Tues & Thur, June 5-28, 5-9 p.m.

G100/Ash TLC in Greenville





HEALTH CARE

Certified Nurse Assistant

Taught by Vicki Olson, concurrently with credit course AHEA 103 01. The cost is \$1,200.

Classroom lecture, simulated labs and supervised experience in long-term care facilities are combined to provide the basic nursing skills and knowledge necessary for you to provide patient care appropriately and safely. Upon successful completion, you are eligible for employment in health care facilities and to apply for the State of Michigan Competency test. A background check is required. You are required to provide proof of a current TB test and Hepatitis B immunization records. The two sets of required scrubs, textbook with CD, lab supplies and badge holder are available at the MCC Bookstore or online at www.montcalm.edu/bookstore.

Class begins on Wednesday, June 13.

XMED 103 01

Theory and Lab:

Mon & Wed, June 13-July 11, 9 a.m.-2:50 p.m.
(no class on Wed, July 4)

S017/Smith Building in Sidney

Clinical Dates:

Tues, June 19-July 10, 9 a.m.- 1:40 p.m.

Mon-Fri, July 12-20, times TBD

First Aid

Taught by Don Eady. The cost is \$65.

The American Heart Association Heartsaver® First Aid is for anyone with limited or no medical training who needs a course completion card in first aid. First aid basics, medical emergencies, injury emergencies and environmental emergencies are covered. The enrollment deadline is one week before the course begins.

XMED 248 01

Fri, June 8, 8 a.m.-noon

G118/Ash TLC in Greenville

CPR/BLS Health Care Provider

Taught by Don Eady. The cost is \$75.

The American Heart Association BLS for Health Care Providers Course prepares a wide variety of health care professionals to recognize several life-threatening emergencies and to provide CPR, use an AED and relieve choking in a safe, timely and effective manner. The course fee includes the cost of the book, mask and card. The enrollment deadline is one week before the course begins.

XMED 243 01

Mon, July 9, Noon-5 p.m.

S014/Smith Building in Sidney

XMED 243 02

Wed, Aug. 22, 8 a.m.-1 p.m.

G118/Ash TLC in Greenville

Medicare Made Easy

Taught by Rachele Lehman and Lori Williams, Medicare plan specialists at Michigan Farm Bureau. This course is free, but pre-registration is required.

Medicare can be confusing. It's easy to miss important information and make a wrong choice that can cost you thousands of dollars. Learn about the ABCs and D of Medicare, and how to make the most of your Medicare benefits. No products will be sold here; it's strictly educational. This class is appropriate for anyone who will be signing up for Medicare in the near future and their caregivers.

XDVE 220 01

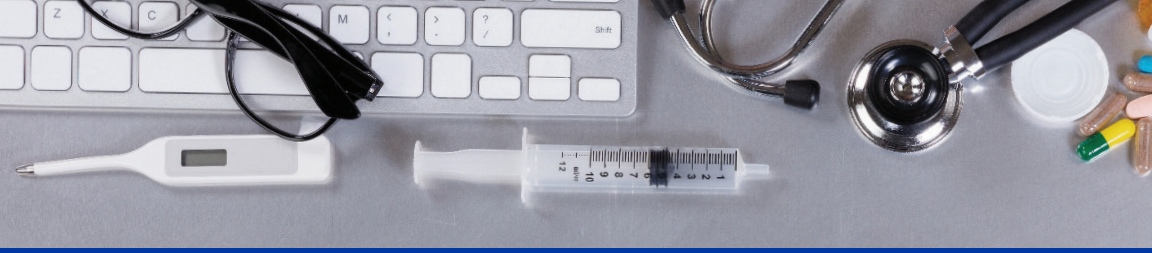
Tues, June 5, 6-7:30 p.m.

I306/Ionia Education Center in Ionia

XDVE 220 02

Tues, Aug. 7, 6-7:30 p.m.

G111/Ash TLC in Greenville



HEALTH CARE

continued

Pharmacy Technician – ONLINE

Taught by CCI. The cost is \$1,299.

This comprehensive course prepares students to enter the pharmacy field and take the Pharmacy Technician Certification Board's (PTCB) exam. Course content includes pharmacy medical terminology, pharmacy calculations, reading and interpreting prescriptions, defining generic and brand name drugs and more. The program also includes an optional clinical externship at a local health care provider.

XMED 303 01

Start anytime. Call to register.

Medical Billing & Coding – ONLINE

Taught by CCI. The cost is \$1,799.

This billing and coding course offers the skills needed to perform complex coding and billing procedures. The course covers CPT (Introduction, Guidelines, Evaluation and Management), specialty fields (such as surgery, radiology and laboratory), ICD-9 (Introduction and Guidelines) and basic claims processes for insurance reimbursements.

XMED 131 01

Start anytime. Call to register.

Medical Coding ICD-10 – ONLINE

Taught by CCI. The cost is \$999.

As of October 2014, the U.S. health care system is working to move from ICD-9 to ICD-10 for service coding purposes. This program includes a detailed review of both ICD-10 (diagnostic coding) and ICD-10-PCS (inpatient procedural coding), differences between ICD-9 and ICD-10, federal regulation, hands-on exercises, case studies and more.

XMED 202 01

Start anytime. Call to register.

Dental Assisting – ONLINE

Taught by CCI. The cost is \$1,299.

This course prepares students for entry-level positions as chairside dental assistants. It covers the history of dentistry, introduction to the dental office, the legal aspects of dentistry, oral anatomy, dental operator, tooth structures, primary and permanent teeth, the oral cavity and other areas. It also includes an optional clinical externship with a local health care provider.

XMED 306 01

Start anytime. Call to register.





HEALTH, FITNESS & RECREATION

Introduction to Pickleball

Taught by John Davis. The cost is \$15.

Join us for this popular, fun sport that combines elements of tennis, badminton and pingpong. This all-age sport is easy to learn, fast paced and exciting, and is growing in popularity across the country.

XPHE 199 01

Mon, June 4-July 9, 9-10 a.m.

Gym/Activities Building in Sidney

Pickleball Level 1

Included with the purchase of a recreation pass, and no registration is required to attend.

If you enjoy playing Pickleball and are past introductory level, this class is for you. Come play Pickleball with others who have fun and an understanding of the game.

Wednesdays in June, July & Aug., 9-10 a.m.

Gym/Activities Building in Sidney

Drop-In Pickleball

Included with the purchase of a recreation pass, and no registration is required to attend.

Whether you are a pro or just wanting to learn the sport, come join us for one or all pickleball sessions. Doubles, singles, one court or two courts. We have two sets or bring your own equipment.

Fridays in June, July & Aug., 9-10 a.m.

Gym/Activities Building in Sidney



Nature Trails

Take a hike on the Kenneth J. Lehman Nature Trails on Montcalm Community College's Sidney campus to experience nature's beauty. More than four miles of groomed trails wind through forests, grasslands and wetlands. They are marked with numbered trail posts and maps are available at most major trail heads. In addition, several special activities are offered by MCC's Nature Trails Committee throughout the year.

Visit www.montcalm.edu/nature-trails for more information.

Pool, Gym & Fitness Center

POOL, GYM & FITNESS CENTER

*The Activities Building summer hours are effective June 5 through Aug. 25. **The pool is CLOSED for maintenance June 11-July 8. It reopens July 9.** For information regarding the pool or gym, call 989-328-1259.*

Pool

*The pool is **CLOSED** for maintenance June 11-July 8. It reopens July 9.* There are programs for everyone – infants through senior citizens – in MCC's NCAA-sized swimming pool. An adult must accompany children younger than 10 years old in the pool.

Open Swim

Mon-Thur.....11 a.m.-2 p.m. & 6-8:30 p.m.
Tues & Thur..... 11 a.m.-2 p.m., 4-5 p.m. & 6-8:30 p.m.
Fri.....10 a.m.-2 p.m.
Sat.....Noon-3 p.m.
Sun.....1-4 p.m.

Lap Swim

Join us for an hour of lap swimming, which is a great form of exercise. Participants must be at least 17 and proficient swimmers. A lifeguard is on deck.

Mon10-11 a.m.
Tues-Thur7:15-8 a.m., 10-11 a.m., 5-6 p.m.

Water Walking

Adults are invited to create their own water walking program and increase their fitness level. Program direction is available from pool staff. Thirty minutes of water walking is equal to two hours of walking on land. Benefits include improved muscle tone, heart health, flexibility and calorie burning.

Mon 7:15-8 a.m. & 9-10 a.m.
Tues & Thur 8-9 a.m. & 4-5 p.m.
Wed & Fri 9-10 a.m.

Water Aerobics

Adults may join instructor-led cardiovascular workouts, which can aid in stress management, improve sleep, help with weight, control appetite, increase energy and reduce heart disease and other ailments. Exercises to music include warmup and cool down, and may include using equipment.

Mon, Wed & Fri.....8-9 a.m.
Tues & Thur9-10 a.m.



Gym

The gym may be used for various activities. The daytime gym schedule varies. Please call 989-328-1259 for more information. Please bring your own basketballs and other equipment you wish to use.

Open Gym

Mon-Thur	7 a.m.-9 p.m.
Fri.....	7 a.m.-2 p.m. & 4-9 p.m.
Sat.....	Noon-3 p.m.
Sun.....	1-4 p.m.

Climbing Wall

MCC's auto belay systems allow for open climb sessions. Anyone younger than 18 years old must be accompanied by a responsible adult. All patrons must sign a waiver and have their belt and shoes checked by the monitor before climbing. We also have belts and climbing shoes available for your use.

Mon, Wed & Fri.....	5-8:30 p.m.
Sat	12:30-2:30 p.m.
Sun.....	1:30-3:30 p.m.

Fitness Center

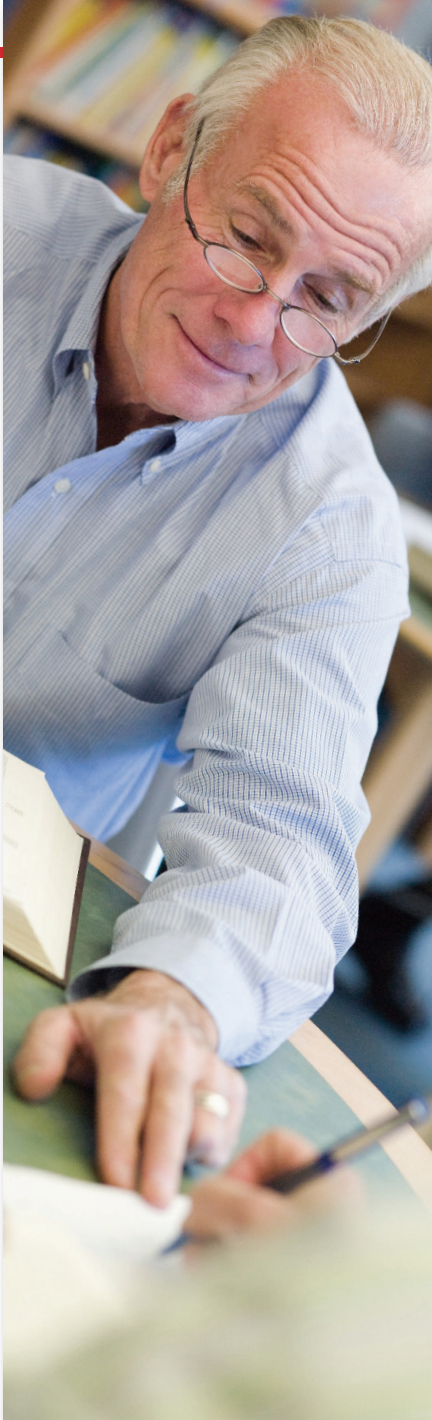
Improve your fitness level in MCC's air conditioned, self-directed exercise center. The center offers state-of-the-art fitness equipment, treadmills, elliptical trainers, bicycles and a free weight area. You must be 16 years or older to use the facility.

Open Fitness Center

Mon-Thur	7:15 a.m.-9 p.m.
Fri.....	7:15 a.m.-2 p.m. & 4-9 p.m.
Sat.....	Noon-3 p.m.
Sun.....	1-4 p.m.

There may be college courses, noncredit classes, or events scheduled in the gym, fitness center and pool. During these time periods, the facilities might be closed. Call 989-328-1259 for confirmation that the area you wish to use is open.





LIFELONG LEARNERS

Fall 2018 series

Montcalm Community College's Lifelong Learners offers academic experiences for learners age 18 and older. The annual membership fee is \$8 per person. Members attend sessions for free. Non-members pay \$2 per session. Admission is free for MCC students who present a current MCC student ID.

Fall 2018 Lifelong Learners sessions include:

September 7, 10 a.m. to noon

Geneology, presented by Sue Nelson

September 21, 10 a.m. to noon

From Farm to Table Part 2,
presented by Michelle Gibson

September 28, all day trip

ArtPrize bus trip to Grand Rapids

October 5, 10 a.m. to noon

Technology, presented by
Kevin Wagenmaker; and Bees,
presented by Elizabeth Pitzer

October 19, 10 a.m. to noon

Presentation by Mike Stafford;
followed by the Lifelong Learners'
annual luncheon meeting

All sessions are held on MCC's Greenville campus, unless otherwise noted.

For more information, visit www.montcalm.edu/LLL or contact Karen Maxfield at karen.maxfield@montcalm.edu or 989-328-1065.



UPCOMING TRIPS!



ITALY AND MALTA TOUR

Percussive Tours

Led by Jared Hauck. The cost is \$2,500.

MCC offers a 10-day trip to Italy and Malta Sept. 25-Oct. 4 in partnership with Percussive Tours. The trip features explorations of Rome, Vatican City, Pompeii, Florence, Pisa and Valletta. The cost per person includes all international and domestic flights, a full-time travel director, all accommodations, airport transfers, some meals, walking tours and all taxes and fees. For more

information and to sign up, visit percussive.org/italy or email Jared Hauck at drmmr@comcast.net. The deadline to register is May 25.

ISLANDS OF THE PHILIPPINES TOUR

Percussive Tours

Led by Jared Hauck. The cost is \$2,500

MCC offers a 10-day trip to the Philippines Dec. 4-13 in partnership with Percussive Tours.

The trip features island hopping in the picturesque areas of Luzon, Cebu and Palawan with an optional two-day extension to Taiwan. The cost per person includes all international and domestic flights, a full-time travel director, all accommodations, airport transfers, some meals, select tours and all taxes and fees. For more information and to sign up, visit percussive.org/asia or email Jared Hauck at drmmr@comcast.net. The deadline to register is Aug. 4.



SERVICE-LEARNING IN HAITI

Percussive Tours

Led by Jared Hauck. The cost is TBD.

MCC offers a nine-day service-learning trip to Haiti Jan. 5-13, 2019, in partnership with Percussive Tours. The trip will include volunteer service at a church-sponsored orphanage in Port-au-Prince during the mornings, and cultural and historic sightseeing in the afternoons. The cost per person includes all international and domestic flights, a full-time travel director, all accommodations, airport transfers,

some meals, select tours and all taxes and fees. For more information and to sign up, visit percussive.org/haiti or email Jared Hauck at drmmr@comcast.net. The deadline to register is Sept. 5.

Summer 2018 15



Montcalm Community College

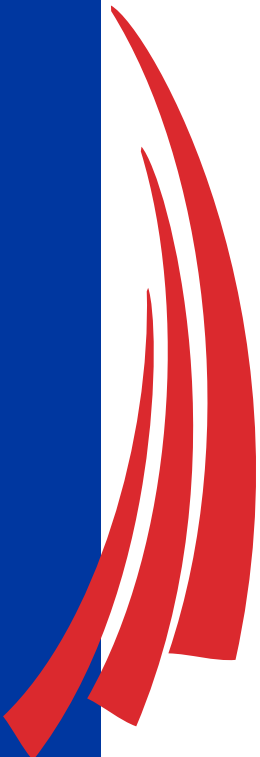
2800 College Drive, Sidney, MI 48885-9723

www.montcalm.edu

989-328-2111

Nonprofit
U.S. Postage Paid
Sidney, MI 48885
Permit #2

ECRWSS POSTAL CUSTOMER



LEARNING IS AGELESS!

Community members are invited to participate in MCC's Lifelong Learners. LLL was organized in 1998 to provide enrichment experiences for mature learners. Membership is open to those aged 18 and older. Visit www.montcalm.edu/LLL or call 989-328-1065 for more information.

ARTS AND CULTURE AT MCC

Montcalm Community College offers a variety of artistic and cultural opportunities, including musical presentations, theater productions, one-day trips, art exhibits, lectures and more. Visit www.montcalm.edu/arts-and-culture for a list of coming events.